

YEAR 2013

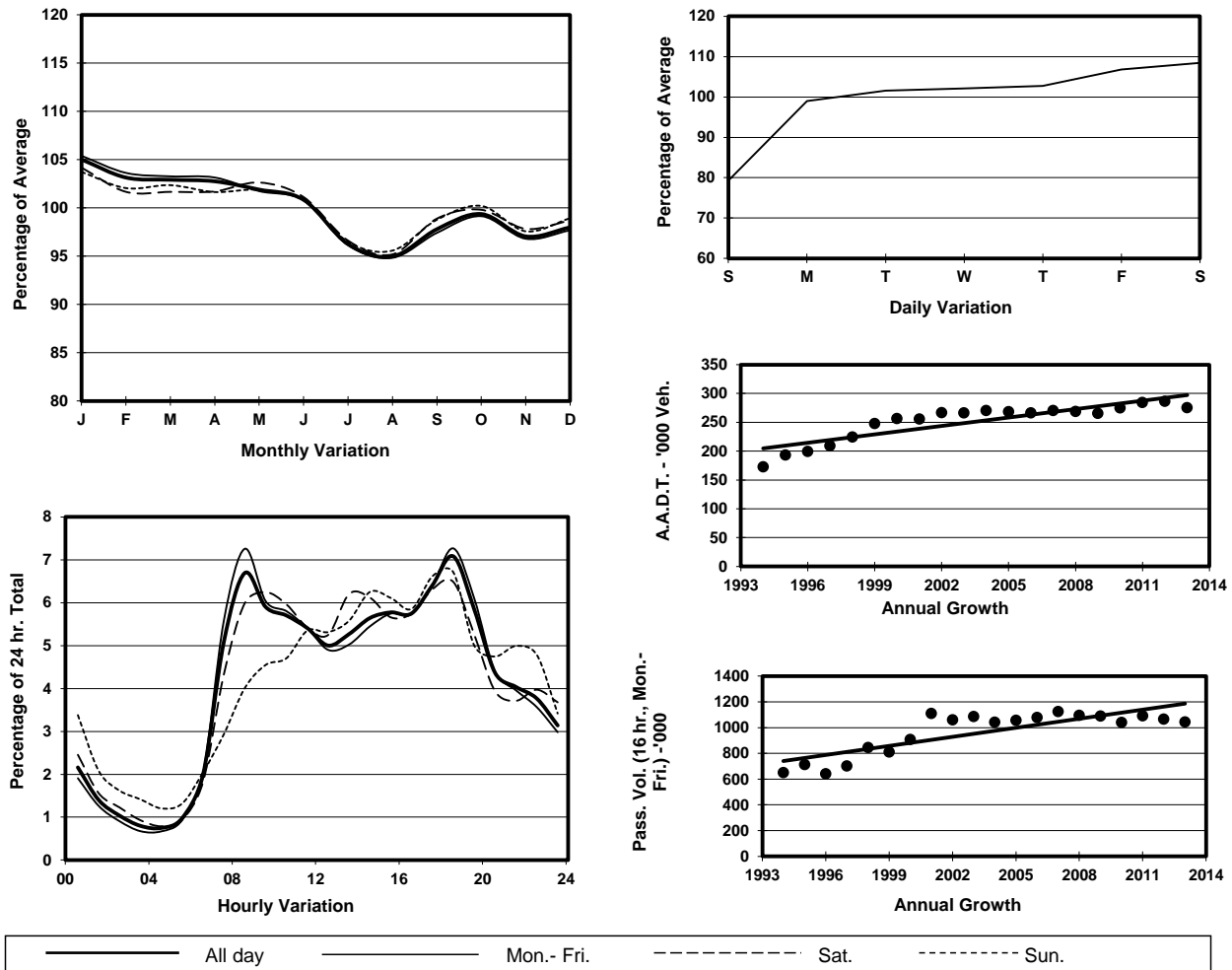
Location

Screenline S-S(East end of Tuen Mun & Yuen Long)

Stations on Cordon/Screenline

5012, 5016, 5029, 6207, 6208 and 6209

1. TRAFFIC FLOW VARIATION AND GROWTH



2. TRAFFIC CHARACTERISTICS (BY DIRECTION)

Parameter	All - Day	Mon. - Fri.	Sat.	Sun.
EAST BOUND				
A.A.D.T.	139170	144820	150080	110670
R 12 / 24 - %	73.1	74.1	72.4	67.1
R 16 / 24 - %	88.5	89.3	87.9	84.6
AM Peak Hour	0800-0900	0800-0900	0800-0900	0900-1000
One-way flow at AM peak hour	11040	12500	10390	5590
T - % (AM)	-	21.7	-	-
PM Peak Hour	1800-1900	1800-1900	1700-1800	1700-1800
One-way flow at PM peak hour	8840	9390	9110	7540
T - % (PM)	-	21	-	-
Prop.of commercial vehicles - 16 hr.	-	25.9	-	-
WEST BOUND				
A.A.D.T.	135910	139950	151410	110480
R 12 / 24 - %	66.3	67	67.1	60.9
R 16 / 24 - %	87	88	85.4	82.5
AM Peak Hour	0800-0900	0800-0900	0900-1000	0900-1000
One-way flow at AM peak hour	7370	8160	8540	4480
T - % (AM)	-	29.1	-	-
PM Peak Hour	1800-1900	1800-1900	1800-1900	1800-1900
One-way flow at PM peak hour	10650	11310	10560	8240
T - % (PM)	-	21.9	-	-
Prop.of commercial vehicles - 16 hr.	-	27.5	-	-

3. OTHER INFORMATION AND COMMENT

4. Vehicle classification and occupancy - Monday to Friday

Time		Class of vehicle									
		Motor Cycle	Private Car	Taxi	Private LB	PLB	Goods veh.		Non Fr. Bus	Fr. Bus	
							Light	M & H		SD	DD
0700-0800	Pro	2.3	39.3	7.5	0.9	4.4	19.7	15.8	5.2	0.1	4.7
	Ocp	1.0	1.4	2.1	8.8	13.5	1.5	1.2	25.1	26.9	65.7
0800-0900	Pro	1.6	47.5	6.6	0.6	2.4	16.5	16.8	3.7	0.1	4.1
	Ocp	1.1	1.4	2.1	6.4	13.3	1.5	1.2	26.4	27.7	66.4
0900-1000	Pro	0.8	39.7	7.0	0.6	2.3	21.4	21.6	2.7	0.1	3.9
	Ocp	1.0	1.4	2.1	3.7	11.5	1.4	1.3	16.1	20.7	37.0
1000-1100	Pro	1.0	36.2	5.3	0.4	2.4	23.9	24.2	2.6	0.1	3.8
	Ocp	1.0	1.4	2.1	3.1	11.2	1.4	1.2	18.1	12.2	31.1
1100-1200	Pro	0.8	37.9	5.7	0.7	2.5	22.2	24.4	2.1	0.1	3.5
	Ocp	1.0	1.4	2.1	2.8	10.2	1.4	1.2	17.2	11.0	32.9
1200-1300	Pro	0.8	37.7	6.1	0.8	2.7	21.8	23.7	2.7	0.1	3.6
	Ocp	1.1	1.4	2.0	4.2	11.4	1.4	1.2	17.7	10.2	30.6
1300-1400	Pro	0.8	37.0	5.8	0.8	2.3	21.7	25.0	2.7	0.1	3.7
	Ocp	1.0	1.5	2.2	1.9	11.6	1.4	1.2	18.2	12.3	36.1
1400-1500	Pro	1.0	35.3	5.6	0.5	1.8	23.2	26.4	2.5	0.1	3.7
	Ocp	1.0	1.6	2.2	3.4	10.6	1.4	1.2	15.8	12.3	31.3
1500-1600	Pro	0.9	37.4	5.6	0.8	1.6	21.5	26.5	2.0	0.1	3.6
	Ocp	1.1	1.4	2.2	4.6	10.2	1.4	1.2	14.2	10.7	32.6
1600-1700	Pro	1.0	38.0	5.7	1.0	2.1	20.7	24.4	2.9	0.1	4.0
	Ocp	1.0	1.5	2.3	4.5	11.3	1.5	1.2	15.2	13.9	36.6
1700-1800	Pro	2.3	36.7	6.5	0.8	2.2	23.1	20.4	3.1	0.1	4.9
	Ocp	1.0	1.4	2.4	2.7	13.5	1.5	1.2	16.5	19.3	45.5
1800-1900 Peak Hour	Pro	2.1	52.2	6.2	0.2	2.2	15.5	13.8	3.5	0.1	4.1
	Ocp	1.0	1.5	2.4	2.7	15.7	1.4	1.1	26.8	30.0	66.6
1900-2000	Pro	1.4	56.1	8.6	0.2	2.7	11.2	11.2	4.2	0.1	4.4
	Ocp	1.0	1.4	2.2	1.2	13.9	1.3	1.1	20.3	23.3	57.5
2000-2100	Pro	1.5	56.3	10.8	0.3	3.2	8.9	10.5	3.9	0.1	4.5
	Ocp	1.1	1.4	2.0	1.7	12.0	1.3	1.1	13.7	14.8	44.6
2100-2200	Pro	1.3	53.5	13.8	0.4	3.4	9.2	9.9	2.9	0.2	5.6
	Ocp	1.1	1.4	2.0	1.6	10.2	1.3	1.1	14.5	13.3	41.0
2200-2300	Pro	1.8	56.3	14.9	0.2	2.9	7.0	8.6	2.2	0.2	5.9
	Ocp	1.2	1.4	1.9	2.0	10.9	1.3	1.1	11.3	11.6	38.6
16 hours	Pro	1.4	43.2	7.2	0.6	2.5	18.4	19.3	3.1	0.1	4.2
	Ocp	1.1	1.4	2.1	4.1	12.2	1.4	1.2	19.3	17.7	45.2

Legend

- Pro.** Proportion of vehicles in % (Sum may not add up to 100% due to figure rounding)
- Ocp.** Average occupancy of vehicles
- M & H** Medium and Heavy